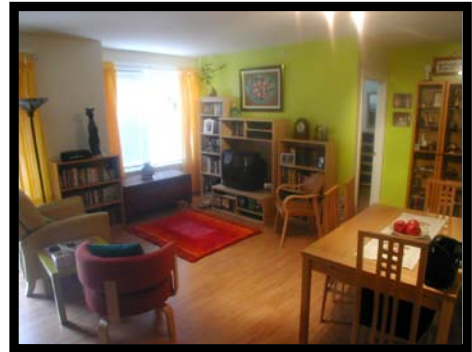


**2721 1st Avenue, #608, Seattle \$310,000**

**Best Value Priced Condominium in Avenue One!**



RARE ONE BEDROOM in Avenue One Building. Exciting Belltown living near Olympic Sculpture Park and the Space Needle with peek-a-boo view of Puget Sound! South facing meticulously maintained condo offers a private balcony, gourmet kitchen with granite counters, gas stove, tile flooring, extra large private storage unit and secure parking. Avenue One offers a rooftop deck including a barbecue grill, exercise room, a guest suite, concierge services and a facilities room to entertain many guests including a grill for your use.

**MLS #28091916**

- 2005 Construction
- 680 Sq. Ft.
- One Bedroom
- Walk-in Closet
- One Full Bathroom
- Gourmet Kitchen
- Washer and Dryer
- Reserved Parking Space
- 2009 Taxes \$2,400
- Exercise Room
- Rooftop Deck
- Concierge Desk
- Secured Building/Garage
- Double Private Storage Unit
- Ceramic Tile
- Near Park & Space Needle

MLSvideo.com  
8201 164th Ave NE, Suite 200  
Redmond, WA 98052-7615

All information is deemed reliable but is not guaranteed. Buyer to verify to own satisfaction.

Michelle Franz  
michelle@mlsvideo.com  
(425) 213-6256

